

# intouch

The Hills Group magazine

Issue 38 March 2016



**Celebrating  
1,000,000m<sup>3</sup>  
of concrete sales  
2016**

## **Homes' excellence**

Four nominations for Homes in LABC Building Excellence Awards  
- see page 3

## **Compliments from the kerbside**

Waste Solutions' kerbside crews receive praise from the public  
- see page 6

## **A unique partnership**

Read how funding from Hills is helping Wiltshire's flora and fauna  
- see pages 12 and 13



# Contents

- 03 Homes**
  - Four LABC nominations
  - Princess Anne visits Arlington Fields

---

- 04 Homes**
  - Considerate Constructors certificate
  - Future developments and sales update

---

- 06 Waste Solutions**
  - HRC league table
  - Compliments from customers
  - Food waste service goes live
  - Working towards ISO 50001

---

- 08 Quarry Products**
  - 1,000,000m<sup>3</sup> of concrete

---

- 10 Quarry Products**
  - Fullamoor feedback shapes planning application
  - 2016 starts with health and safety

---

- 11 Group news**
  - Safewell appointed as occupational health provider
  - Charity challenges

---

- 12 Group news**
  - Wiltshire Wildlife Trust 2015/16 report

---

- 14 Group news**
  - The Hills Group from the ground up
  - Near miss reporting in action
  - Golf club tributes to Robert Hill
  - When Grahame Hill met Joe Louis

---

- 16 Competitions**
  - Bauble competition winner
  - intouch quiz - win £50 Amazon vouchers
  - Just for fun... Easter puzzles

## Publishers Note

intouch is published by The Hills Group Limited. It is distributed three times a year to employees, pensioners, shareholders and friends of The Hills Group. Each copy of intouch is collated and mailed by Swindon charity Phoenix Enterprises who work with people recovering from short and long-term mental health problems [www.phoenixenterprises.co.uk](http://www.phoenixenterprises.co.uk).

Issue No 39 will be published in Quarter 3, 2016. Please submit news and photographs (if possible) to the communications department, either to the address opposite, by telephone 01793 714977 or via email to [info@hills-group.co.uk](mailto:info@hills-group.co.uk)

The Hills Group Limited, Wiltshire House, County Park Business Centre, Shrivenham Road, Swindon, Wiltshire SN1 2NR  
**Tel:** 01793 781200  
**Email:** [info@hills-group.co.uk](mailto:info@hills-group.co.uk)  
**Web:** [www.hills-group.co.uk](http://www.hills-group.co.uk)

 @HillsGroup  /HillsGroup  
 The Hills Group Limited

# VIEWPOINT

## Product of their own success...

It's not often that one can actually manufacture your own milestones, but that's not the case if you produce concrete! Many congratulations must go to the Quarry Products team for achieving the sales of one million cubic metres of ready-mixed concrete since starting up ten years ago. I am confident that they will achieve the second million in a fraction of that time.

### Awarding time ahead?

Despite the fact that the Homes team has had to weather a very difficult market over the last eight years they still achieved a number of industry award nominations and wins. However, now that the pace of sales has eventually started to pick up so have the quality recognition and award nominations! You can read how all the hard work is paying off on the page opposite.

### The story so far...

Although it has been a long time in the pipeline, I am pleased that along with this issue you should be receiving a copy of the Group brochure 'The Hills Group ... from the ground up.' This gives a concise narrative together with some fascinating pictures of Group's story so far, and I do hope you enjoy it!

### Best wishes, Mike Hill, chief executive



The Hills Group Limited makes every effort to verify all information contained within intouch but does not warrant to its accuracy. No view or opinion expressed within intouch should be considered to be that of The Hills Group Limited, its associated companies or any director or officer in its employment. Please recycle your copy of intouch when you are finished with it.

## Four nominations for Homes' excellent team

The Homes team are no strangers to awards, having scooped a number of accolades in recent times, but they have been nominated for no less than four LABC Building Excellence Awards:

- LABC Residential Site Agent of the Year - Jan Pearce (Battlewell) - nominated by Wiltshire Council
- LABC Residential Site Agent of the Year - Ahmet Ibrahim (Arlington Fields) - nominated by Cotswold District Council
- Best partnership with a local Authority building control team - Hills Homes - nominated by Swindon Borough Council
- Best small new housing development - Tommy's Barn, Church Lane Bishopstone (shown right) - nominated by Swindon Borough Council

Nick King Group director - Homes said: "It is great news that the quality of our work has been recognised in such prestigious awards. We'll have our fingers crossed for some winners at the awards night in May!"



## Hills' King and royal princess meet at Arlington Fields

Arlington Fields, a rural housing development in Bibury Gloucestershire built by Homes on behalf of Cirencester Housing, received the 'royal seal of approval' when HRH The Princess Royal conducted the official opening earlier this year.

Group director, Nick King attended the event along with representatives from Peter Kent Architects who worked with Homes on the development. Her Royal Highness was given a tour of the new homes and was introduced to the teams responsible for delivering the project.



Nick King, Group director for Homes pictured shortly after meeting HRH The Princess Royal

Some of the stylish homes at Arlington Fields.



# Certificate confirms **Karl's Calne site is a top performer**

Site manager, Karl Kaljusko, has been acknowledged for the excellent way he manages his site 'Station Meadows' in Calne, with the presentation of a Certificate of Compliance from the national Considerate Constructor's Scheme (CCS).

Karl said: "I was really proud to learn that the CCS assessment of my site had resulted in such good scores in each of the five categories assessed. It is gratifying to be acknowledged in this way as a lot of work goes into maintaining such high standards."

The first Homes site to register with the scheme was in 2011 and since then each of Homes' development sites have been operated in compliance with the Code of Considerate Practice. For more information about the CCS see issue 35 of **intouch**.



*Karl Kaljusko, site manager and John Doody, production manager with the Considerate Constructors Scheme certificate.*



*CGI of 'The Edington' house type.*

## Hillside - Blunson (above)

Signage has been erected on the site to encourage prospective buyers to register their interest in this mixed development of 61 attractive dwellings to the north east of Swindon.

## Watchfield (right)

Look out for this new development located to the south east of Highworth, in the Vale of the White Horse, Oxfordshire, soon to be depicted in a brand new brochure.



# Developments update

Hills' Homes continue to be very popular with local buyers and Karl's site is no exception. All three phases of the Station Meadows development, totalling 101 new homes, are now sold. All four properties at The Orchard in South Marston were quickly snapped up, with the first residents now settled into their new homes which border the Wiltshire Wildlife Trust 'St Julian's Wood' nature reserve.



*Station Meadows, Calne*

## Stembridge Close, Burghclere

Four of the six executive homes have already been sold or reserved in this popular rural area; leaving just two of 'The Ash' house types remaining.



*CGI of the remaining plot 'The Ash' at Burghclere.*



*The Orchard, South Marston*

## Battlewell, Purton

Only one of the four bedroom family homes are still available at this stylish development on the edge of the Cotswolds.

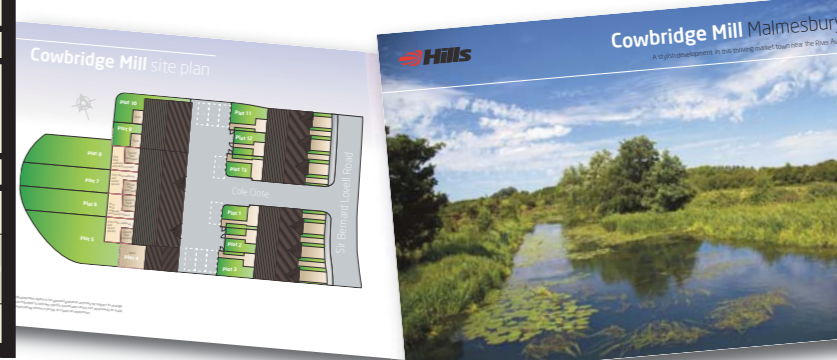


*CGI of Plot 4, 'The Hyde' house type.*



*Room plans of 'The Ollerton'.*

**Cowbridge Mill, Malmesbury**  
Homes' latest brochure is now available for this beautiful new development in Malmesbury. Work is progressing well and a number of prospective buyers have already registered their interest.





## Marlborough retain top position in the recycling charts

The Marlborough HRC team of Kevin Archer, site supervisor and Julie Pye, site operative have retained the top position in the HRC recycling charts.



Marlborough HRC site supervisor Kevin Archer helps a member of the public with her recycling.

% of waste recycled November 2015 to end of January 2016

1 Marlborough 77.57%	7 Devizes 73.83%
2 Warminster 75.17%	8 Honeyball (Calne) 71.07%
3 Melksham 75.13%	9 Salisbury 69.13%
4 Stanton St Quintin 74.93%	10 Everleigh 68.63%
5 Trowbridge 74.83%	11 Amesbury 67.97%
6 Purton 74.47%	

As Kevin commented: "We have built up such a good relationship with our customers. We actively encourage them to recycle and they are happy and proud when they see the recycling percentages go up. We try to make them feel as if they are doing their bit for the environment."

## Compliments from the kerbside...

Our kerbside crews do a great job collecting recycling from Wiltshire's residents and it seems their efforts above and beyond the call of duty are not going unnoticed...

**"I am writing to express what good ambassadors you have working for your company. When walking my daughter to school your guys that empty the black boxes have always been polite, waved at her and have always had a cheerful word to say. It's really uplifting to see people so happy when maybe they're not doing one of the most pleasant jobs. I am just writing to express our thanks for the job they do."**

Yours thankfully, Mrs F (Ludgershall)

**"Thank you to the Hills HGV driver who helped myself and three children on their ponies safely negotiate a short stretch of a busy road yesterday. He slowed up and effectively held traffic back until the horses got to the bridleway off the road."**

Thanks again, Miss L (Calne)



## NEW Food waste service goes live

Waste Solutions recently launched a new commercial food waste recycling service and it is already proving popular with local businesses.

Customers can choose from 120 litre or 240 litre purpose-built containers which are provided with liners and collected at least once a week. Waste Solutions also offer a range of caddies and pedal containers for hygienically storing food waste.

All food waste is 100% recycled using a process called anaerobic digestion, which turns the food waste into electricity for the National Grid and an organic fertiliser for farmers.

Gary McKinnon divisional director - Waste Solutions said: "We launched the new food waste service with an email marketing campaign. Enquiries have converted into new customers very quickly and we will be looking to expand the customer base and collection rounds over the coming months."



Gary McKinnon, divisional director - Waste Solutions and Caroline Wilde, waste consultant developed the new food waste service.



The new collection vehicle and distinctive orange food waste bins.

## ESOS achieved, now for ISO 50001

### Spotlight on energy saving and sustainability

The Hills Group has successfully completed the Government's mandatory Energy Savings Opportunity Scheme (ESOS) assessment.

Hills appointed independent consultants SGS to conduct the ESOS audit which assessed the total energy consumption of all the buildings, processes and transport operations and identified potential energy saving opportunities within the three Hills divisions and County Park offices.

In addition to reviewing its energy use, Waste Solutions is now working to establish an Energy Management System (EnMS) certified to ISO 50001 which focuses on continual improvement of energy performance in time for the start of the new Wiltshire Council waste management contract in 2017.

As Waste Solutions' environment manager Daryl Taylor (pictured right) explains: "Hills is committed to continually improving energy efficiency. Using energy efficiently helps us save money, reduce our carbon footprint and makes our business more sustainable. We can only achieve this if every employee contributes and plays their part."

What can you do to use energy more efficiently?

- If you are travelling to meetings try to lift share with work colleagues
- When driving avoid excessive acceleration and braking - try to keep a consistent legal speed
- Don't leave your vehicle engine running/idling unnecessarily
- Close building doors behind you and keep windows closed
- Don't rely on screensavers - use power-saving features such as hibernate
- Don't leave taps running unnecessarily
- Turn lights off in meeting rooms when not required.





# 1,000,000m<sup>3</sup>

## Setting new records

Quarry Products is celebrating the remarkable milestone of selling 1 million cubic metres of ready-mixed concrete.

*Pictured left to right are: Stuart Allen, commercial manager; Stuart Cordy, business manager; Terry Newsham, business manager; Jon Sellar technical manager (Beton Services); Gavin Walton, business manager and Peter Andrew, Group director Quarry Products*

Quarry Products' ready-mixed concrete business has come a long way since it started trading in 2005 - and now supplies over 1,000 customers in central southern England with concretes and screed for use in applications including: house building, farms, stables, bridges, roads and motorways, docks, factories, railways, sea walls, industrial units, shops, town centre developments and airfields to name a few.

Reflecting on the sales milestone, Group director Peter Andrew said: "Selling 1,000,000m<sup>3</sup> of ready-mixed concrete is a

fantastic achievement. I would like to thank all our customers, new and old for their business and support. The team do a great job fostering longstanding relationships with customers which is underpinned by a consistently high quality service, quality assured products and our ongoing commitment to health and safety.

"We are not resting on our laurels as there are more business opportunities to pursue. We are already working towards the next million cubic metres!"

## Out of this world sales figures...

1,000,000m<sup>3</sup> of concrete would stretch 621 miles into space

250 miles to the International Space Station

One million cubic metres of ready-mixed concrete sounds a lot, but the following statistics really put into perspective the impressive volumes sold by the five concrete plants:

- If the one million cubic metres of concrete were stacked one on top of another they would reach 621 miles in to space. That's 371 miles higher than the International Space Station!
- For a more down to earth stat, if the column of concrete cubes was laid down in a straight line it would stretch further than the direct distance between Land's End to John O'Groats (603 miles).

### SALES VOLUMES BY SECTOR

36% Construction (commercial & industrial)	32% Housing	9% Agriculture
9% Domestic	6% Utilities	5% Merchants
		3% Screed

#### Expert advice

A key member of the Quarry Products team is long serving technical consultant and renowned industry expert, Jon Sellar. Jon designs the concrete mixes - combining different aggregate types, sizes and cements to ensure that the concrete meets specifications and achieves the required strength.

#### Leading the industry

Quarry Products is also a leading light in the ready-mixed concrete industry as Group director Peter Andrew is a member of the governing board for The Quality Scheme for Ready-Mixed Concrete (QSRMC) and also sits on the management committee of the BRMCA (British Ready-Mixed Concrete Association) helping to ensure that independent operators like Hills have a national voice.



## What the customers say...

"We have been working with Hills for many years, and enjoy an excellent working relationship. They always go the extra mile when we need it, and remain customer focused - especially when we need to work together to overcome the challenges that the industry throws at us."

**Steve Blower, managing director M.J. Church**

"Having dealt with numerous concrete suppliers over the years, dealing with Hills is a pleasure, from sales through to the drivers. If they can take the order and deliver on time or as close to the time they will, if they can't they will tell you, and not just take the order and hope for the best! The product is generally very good and consistent and they're just decent people to deal with."

**Ed Bodman, E.D & W Bodman**





# Fullamoor feedback helps shape planning proposal

As we go to press with **intouch**, Quarry Products has submitted a planning application to Oxfordshire County Council (OCC) for the proposed Fullamoor Quarry.

The planning application follows a period of consultation which began back in May 2014 and included a public exhibition where 150 people came to find out more about the proposed quarry and to give their feedback.

As Peter Andrew, Group director - Quarry Products explains: "Our plans for Fullamoor Quarry were presented at the public exhibition held on 25 November 2015 and published on a dedicated website which attracted 379 viewers. In total 78 feedback forms and letters were received which generated 151 separate responses on different aspects of our proposal.

"The changes we have made in response to this feedback have been incorporated into the planning application which has been submitted to OCC for consideration. We hope that we can continue to engage openly with local residents throughout the rest of the planning process for Fullamoor Quarry."

## What has changed as a result of pre-planning consultation?

- Site size reduced from 160 hectares to 104 hectares
- Tonnage halved from 5 million to 2.5 million tonnes
- Time on site reduced from 25 years to 10 years
- Extraction now further away from neighbouring properties
- No material is being imported for restoration
- Traffic routeing agreement proposed
- Scheduled Monument at Fullamoor Plantation protected
- Proposed improvements to the A415 at Clifton Hampden crossroads
- Site entrance designed to accommodate cyclists and pedestrians
- Greater storage capacity for flood waters
- Additional footpaths created across the site
- Significant portion of site to be restored for agricultural use
- Lakes available for quieter recreational use such as fishing and non-motorised water sports.

25 years  
↓ ↓ ↓  
10 years



## HQP kick-start 2016 with H&S

Quarry Products delayed the opening of all its sites on the first day back to work in 2016 for two hours to allow employees to participate in a special health and safety training session as part of the ongoing 'Safer for All' campaign.

Peter Andrew, Group director Quarry Products, said: "Health and safety will always be a top priority for us. Starting the new year with a focus on health and safety has helped us reinforce our 'Safer For All' philosophy and our commitment to deliver improvements in employee safety and wellbeing."

As part of the briefing, LGV drivers were given a new 'Delivering Safety' booklet which brings together a wealth of information on health and safety topics including: reporting near misses; reversing on site and traffic management plans for each Quarry site.



# Occupational health is in 'Safewell' hands

Following a review of the company's current health screening and occupational health requirements Hills has appointed Wiltshire based Safewell as its new occupational health provider.



In addition to providing support for occupational health referrals and statutory health monitoring, Safewell will be working with Hills to provide enhanced health screening services to employees in key operational roles following The Hills Group board's commitment to improve wellbeing monitoring in the workplace.

Speaking on the appointment Pamela Hunt, deputy human resources manager said: "An occupational health review group was established at the end of last year with representatives from all three divisions to review and coordinate the Group's requirement for occupational health services. We were all very impressed by Safewell's offering. The provision of a dedicated



Pamela Hunt, deputy HR manager and Paul Elling, health and safety manager were members of the occupational health review group.

occupational health professional to our business and the fact that they are based locally is a massive plus and will give us a more flexible and direct service."

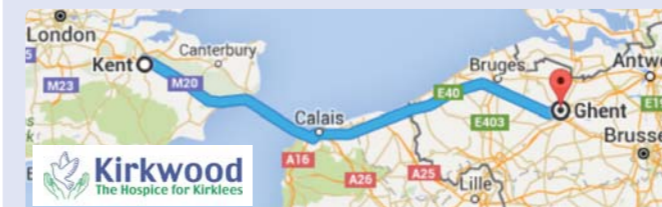
Paul Elling, health and safety manager - Waste Solutions, who sat on the selection committee, added: "Widening our health screening program is a benefit to both our employees and the company. It is key to helping us ensure that we all work in a safe environment and delivering our Safer For All commitment."

## Challenging times for charity...

Hills' employees will be taking on some gruelling physical challenges for charity this year. Here's a preview of just two:

### Waste Solutions trio to cycle from 'Kent to Ghent'

Mike Webster, Group director - Waste Solutions, Nathan Carr, collections and fleet manager and Gary McKinnon, divisional director will be donning the Lycra to take on a 150 mile cycling challenge from Kent to Ghent in Belgium on 12-14 May. The intrepid cyclists are raising money for Kirkwood Hospice. To donate visit [www.justgiving.com/MikeKent2Ghent](http://www.justgiving.com/MikeKent2Ghent)



### Dazza's toughing the mud for Parkinson's UK

Publications and online officer Darren Goddard will be taking on the 12 mile cross country course and 30 obstacles designed by British Special Forces (involving electricity, mud, water and fire!) in a 'Tough Mudder' challenge on 24 September. Darren is raising money for Parkinson's UK, a disease his Dad is fighting. To donate visit [www.virginmoneygiving.com/DarrenGodd](http://www.virginmoneygiving.com/DarrenGodd)



Are you taking on a challenge for charity? Tell us about it via email [info@hills-group.co.uk](mailto:info@hills-group.co.uk)

## Changes to annual leave year

From 1 May 2016 the company's annual leave year will become aligned with the financial year (1 May to 30 April). The change to the annual leave year is a result of new mandatory

financial regulations. Annual leave entitlement from 1 January to 30 April 2016 will be combined with entitlement for the new year, making the 2016/17 leave year a 16 month period. Employees are not required to 'use up' any leave accrued by 30 April 2016.



# A unique partnership



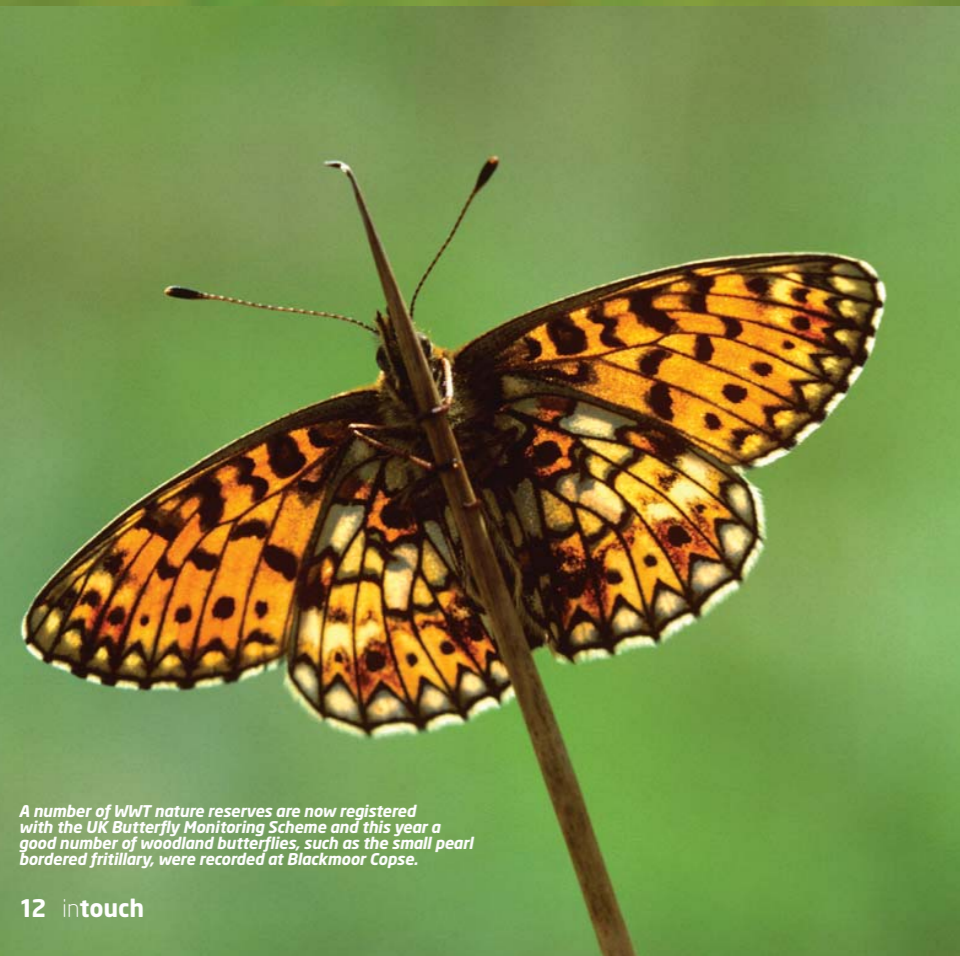
It has been a busy year for the Wiltshire Wildlife Trust (WWT) as its dedicated staff and hundreds of enthusiastic volunteers continue their significant work across the county improving and protecting the areas that are vital to our county's fauna and flora. The latest report from the WWT gives a detailed account of how funding from Hills has been used to enhance Wiltshire's natural environment for the benefit of both wildlife and people. A copy of the report can be downloaded from The Hills Group website.

Hills' unique relationship with WWT is one that we are very proud of and has endured for the past 25 years.



Abundant food supplies keep the kingfishers at Lower Moor Farm well-fed.

Common spotted orchids found in traditional hay meadows at Clattinger Farm Nature Reserve.



A number of WWT nature reserves are now registered with the UK Butterfly Monitoring Scheme and this year a good number of woodland butterflies, such as the small pearl bordered fritillary, were recorded at Blackmoor Copse.



Raptors including peregrine falcon, merlin, buzzard, red kite, hobby, kestrel and these short-eared owls have all benefitted from habitat improvements following a change in the grazing methods at neutral meadow sites.



Woodland habitats such as Oysters Coppice have made ideal nest areas for the dormouse.



Two pairs of curlews were spotted on the damper fields at Blakehill Farm. Their numbers have rapidly declined across Europe and halting this is one of the biggest conservation challenges.

**Did you know that Wiltshire is home to:**

- 50% of the UK's total lowland calcareous grassland (chalkland) habitat, essential for wildflowers, moths, butterflies and birds
- The largest lowland neutral meadow restoration and maintenance project in the UK at Blakehill Farm
- Over 47% of target species highlighted in the UK Biodiversity Action Plan (BAP) targets for neutral grasslands
- The rare and protected Desmoulin whorl snail (found at five sites across the county including Jones's Mill nature reserve, Pewsey)
- A family of otters (sighted almost daily at Lower Moor Farm)
- The finest example of traditional hay meadows in Britain - during the summer months Clattinger Farm is a riot of colour and the air filled with the sounds of insects and songbirds.



# The Hills Group from the ground up

As you will have seen, your copy of *intouch* 38 is accompanied by a new brochure 'The Hills Group from the ground up', which celebrates the company's rich 116 year history.



'From the ground up', looks at the formative years which shaped The Hills Group, as well as exploring the current businesses and looking



ahead to the future direction of the company. Edward Hill would undoubtedly be proud and amazed at how his brickworks would transform into a multi-million pound company serving customers across central southern England and further afield.

Look out for some amazing photographs from the Hills archives including a Hill family portrait from 1943 (shown below). If you have any comments or feedback on 'from the ground up' please email them to [info@hills-group.co.uk](mailto:info@hills-group.co.uk) or send them in the internal post to the communications department at County Park.



## YOU SAID, WE DID... The near miss system in action

Since the near miss scheme began in 2013, over 2,500 near miss incidents have been recorded (using near miss books) helping to identify hazards before accidents occur.

Here are a few of the latest unsafe acts and unsafe conditions employees have submitted and the actions taken to resolve them.



**SEE IT. REPORT IT.**  
**USE YOUR NEAR MISS BOOK**

Employee	Location	Unsafe act or condition	Action
Shaun Harvey	Amesbury HRC	Customer standing on handrail of steps to retrieve an item.	Advised customer not to step on handrail.
Mike Hill	Lower Compton MRF	Employee parked facing forwards ie not reverse parked as instructed by signage.	Reminded about reverse parking.
Stuart Allen	Dryleaze	Person operating jet washer working too close to moving trucks.	Rethink of safe system for cleaning trucks.
Steve Smith	Lower Compton	Light on cabin shines in driver's eyes when entering site.	Light put on tall pole out of eyeline.
Grant Carter	Woodsford	Floor covered in slippery film of silt from flood water.	Dig blocked ditch along quarry boundary and wash down area.
Kevin Hester	Upwood Quarry	Vehicle speeding down the haul road.	Remind driver of speed limit.
Brian Ryder	Honda	Isolation switch missing on cardboard baler.	Baler taken out of service and repaired.
John Edwards	Amesbury offsite	Icy conditions and slippery path.	Took extra care and used ice grips.
Jacqui Hibbert	Purton workshop	Bins left in walkway in yard near diesel tank.	Bins moved across to wash area.

## Golf award and new course are fitting tributes to Robert

The late Hills Group chairman Robert Hill was remembered at Marlborough Golf Club's (MGC) 2016 awards dinner - with an award in his name being presented to the junior golfers of the year.

Robert was captain of MGC in its centenary year 1988 and president of the club for many years. As Robert's widow Rosie Hill explains: "Robert was very supportive of junior golf and was instrumental in setting up Hills' sponsorship of the Wiltshire Junior Golf Open at Broome Manor. This played a part in launching



Pictured outside left and right are: Natasha Chapman and Jamie Amor, joint winners of the first 'Robert Hill trophy for young golfer of the year', together with Mike Hill chief executive and Rosie Hill.

the careers of professional golfers like Claire Waite and David Howell. The sponsorship given to MGC to encourage and support juniors at the club is a very fitting memorial to Robert."

In March, MGC opened 'The Boardman-Hill' short course for juniors, in memory of popular patron Frederick Boardman and Robert Hill. Look out for more news on this in future issues of *intouch*.



Robert and Rosie Hill present awards at a Marlborough Golf Club event

## The day Grahame Hill met World Champ Joe Louis

This fantastic photograph from 1944 captures the moment when former Hills chairman (Captain) Grahame Hill, first left, met legendary world heavyweight boxing champion Joe Louis, centre, in Swindon.

What was Joe Louis doing in Swindon? Well, Louis enlisted in the US Army as a private in 1942 and was placed in the 'Special Services Division' (rather than a combat role) as the Army recognised Louis' potential to lift moral amongst the troops.



Louis travelled more than 21,000 miles and staged 96 boxing exhibitions before two million soldiers - including

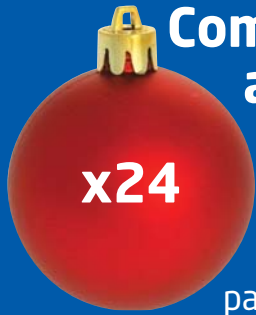
attending a Red Cross Boxing Tournament held in the drill hall of the GWR Mechanics Institution in Swindon. Hills played their own part in the war effort as Grahame and Mervyn Hill setup the Kingshill Home Guard whilst Harold Hill saw active service in Europe. Hills (trading as E Hills & Sons) also donated £1,000 to the Swindon Spitfire fund.

### 2016 health and safety culture survey

For more information on the survey speak to your line manager or supervisor.

Together we can make working at Hills SAFER FOR ALL





## Competition win is a bauble bonus for Boulton

The search for baubles hidden throughout the pages of **intouch** 37 proved very popular, however only 60% found all 24 baubles. Some entrants even managed to find more baubles than were actually hidden!

The winner picked at random by chief executive Mike Hill was Chris Boulton, LGV driver from Shorncote and Chris is pictured right with his sleek new 8" Connect tablet (worth £99)\*. There were three runners-up who each received a £25 Tesco voucher: Julian Cutting, trainee mobile plant operative, Jane Parsons-Hann accounts consultant and Nathan Carr, collections and fleet manager. Thanks to everyone who took part.



\*the Tesco Hudl2 tablet has been discontinued

## Answer 5 to win £50\*\*

Simply answer the following five questions (the answers are on the pages of this issue) then add your name and location and either scan and email your entry to [info@hills-group.co.uk](mailto:info@hills-group.co.uk) or send via the internal post to the Communications department, County Park. A competition entry sheet is available on eTouch for employees.

Name \_\_\_\_\_

Site/location \_\_\_\_\_

**Entries must be received by Friday 13th May 2016.**

\*\*£50 Amazon voucher

**1** What size bins do Waste Solutions provide for their new food waste recycling service? (page 7)

\_\_\_\_\_

**2** How many houses are planned to be built at Homes' Hillside development in Blunsdon? (page 4)

\_\_\_\_\_

**3** What percentage of waste did Honeyball HRC recycle between November 2015 and January 2016? (page 6)

\_\_\_\_\_

**4** How many feedback forms and letters did Quarry Products receive during the Fullamoor Quarry public consultation? (page 10)

\_\_\_\_\_

**5** What percentage of the UK's lowland chalk grassland is in Wiltshire? (page 13)

\_\_\_\_\_

## Just for fun...

Which route should the new food waste service collection vehicle take to pick up the bin? **A, B, C or D?**



Find 14 Easter words hidden horizontally, vertically and diagonally in the grid below.

X	Z	V	W	E	G	K	L	T	R	Z	P	W	N	Q
T	Q	B	Y	B	U	N	N	Y	E	L	J	O	V	N
Y	M	A	A	O	Q	N	V	N	L	N	I	N	P	S
G	O	O	D	F	R	I	D	A	Y	T	N	H	V	T
W	X	V	N	C	R	C	M	K	A	K	O	O	E	D
E	H	M	U	L	H	B	H	R	K	L	T	K	B	A
C	L	B	S	Z	D	O	B	I	I	J	S	J	G	F
R	E	T	S	A	E	E	C	D	C	A	A	W	V	F
K	K	R	T	S	L	J	A	O	B	K	J	A	Y	O
S	J	Z	K	E	O	Y	F	P	L	K	D	A	B	D
V	V	H	C	I	A	H	Q	Z	D	A	Z	P	S	I
I	T	T	F	B	Z	U	D	G	R	X	T	C	O	L
S	L	X	A	W	P	N	Q	I	S	D	E	E	Q	F
J	N	T	U	K	L	T	C	L	M	H	N	H	P	B
Z	F	O	Q	J	G	G	E	T	U	N	D	M	B	Q

- BASKET
- BONNET
- BUNNY
- CELEBRATION
- CHICK
- CHOCOLATE
- DAFFODIL
- EASTER
- EGG
- GOODFRIDAY
- HOLIDAY
- HUNT
- LAMB
- SUNDAY